

The Leys Primary and Nursery School Newsletter

★Accelerating progress

★Enriching wellbeing

★Promoting partnerships

05/03/21

Star of the Week

	Pod	Remote
Zephaniah		Oakley
Anderson	Riley	Lettie
Sendak	Chloe	Zachary
Carle	Charlie	Fletcher
Hargreaves	Chelsea	Mia
Ahlberg	Harry	Jenson
Dahl	Ollie	Charlotte
Freedman	Charlie	
Strong	Leo	Taraji
Pratchett	Malakai	Aydin
Morpurgo	Charles	Elizabeth
Tolkien	Malakai D	Emir
Lewis	Beatrice	Salman
Rosen	Emily K	Albert
Shakespeare	Chris	Chris
Dickens	Daisy	
Kipling		Elaine

RED NOSE DAY

Friday 19th March 2021

**PUPILS can wear their own clothes
AND BRING A CEREAL BOX for a
whole school dominos event!**



WE ARE LOOKING FORWARD TO ALL PUPILS RETURNING TO SCHOOL ON MONDAY 8th MARCH. Please see the letter sent out last week!

Next week please use the one way system to come into school.

Class entrance

All classes will enter school by:

Nursery - main entrance

Reception - classroom doors

Year 1- classroom doors

Year 2-

Ahlberg - back entrance

Hargreaves - front entrance

Year 3 - classroom doors

Year 4 -

Pratchett - side entrance

Morpurgo - entrance from the Junior playground

Strong - classroom entrance

Year 5 - Tolkien- classroom entrance

Lewis - side entrance beside Junior Hall

Rosen - side entrance beside Junior Hall

Year 6 - main entrance

School Uniform

Pupils may wear trainers or comfortable shoes if they don't have school shoes that fit them.



Class of the week	
Friendship Cup	
Headteacher Awards	YEAR
William Edward Jenson Isabelle Emily O	FIVE
Elaine Maxwell Aruba Alfie Mandel Tilly-Mai	SIX



This week I would like to give a **BIG SHOUT OUT** to all our **AMAZING** teaching assistants who have really worked hard to support both remote learning and pods in school this year! They have not only supported teachers but they have led lessons, marked work, kept in contact with families, and supported individual learners with such passion and enthusiasm! We are very very fortunate to have such a dedicated team working with our pupils! A **MASSIVE THANK-YOU** from us all for keeping us all afloat!!!!



Excellence

Respect

Equality

Determination

Courage

Inspiration

Friendship

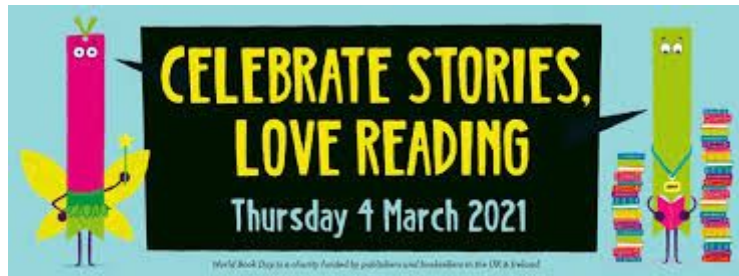
The Leys Primary and Nursery School Newsletter

★Accelerating progress

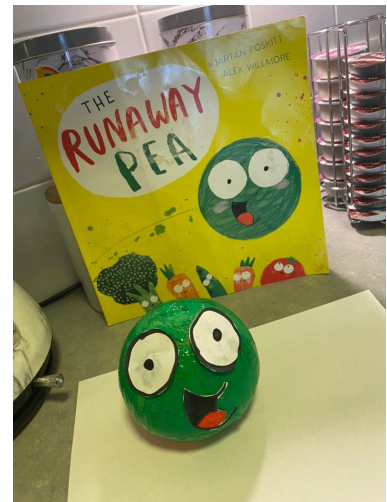
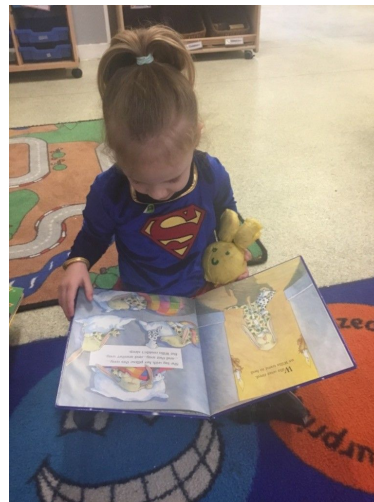
★Enriching wellbeing

★Promoting partnerships

05/03/21



Highlights from World Book day yesterday!!! Amazing creativity!!!!!!



Excellence

Respect

Equality

Determination

Courage

Inspiration

Friendship

The Leys Primary and Nursery School Newsletter

★Accelerating progress

★Enriching wellbeing

★Promoting partnerships

05/03/21



Excellence

Respect

Equality

Determination

Courage

Inspiration

Friendship

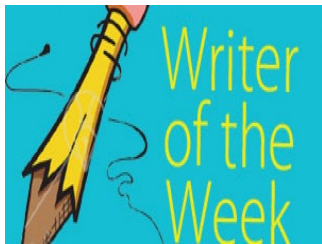
The Leys Primary and Nursery School Newsletter

★Accelerating progress

★Enriching wellbeing

★Promoting partnerships

05/03/21



Writer of the Week-

Pratchett Class

Ethan G

Ethan has written an amazing character description based on a picture that he was given. Over the next few english lessons we will be using this character description to write a creative writing piece.

Eric was an adventurous, energetic young boy that loved to go on adventures. His eyes were as green as emeralds and his hair was as black as the night sky. He had glasses which were as bright and golden as the sun. His clothes were ragged and torn from all the adventures. Even though he is nice and kind, he hasn't had a bath or a shower in a while because his adventures take a long time, because of this he smells pongy. Every adventure Eric has ever been on, his pet dragon, Roary, always came. Eric's dragon, Roary was very similar to him, they both had green eyes, they were both really adventurous... and they were both pongy! Although they are both similar, Roary was immensely sizable compared to his owner. As they entered the scalding cave, they felt excited although deep down inside, they were actually trembling with fear. What journey awaits them?...

Excellence

Respect

Equality

Determination

Courage

Inspiration

Friendship

The Leys Primary and Nursery School Newsletter

★Accelerating progress

★Enriching wellbeing

★Promoting partnerships

05/03/21



WELLBEING



Exciting news, the school has joined the first wave of the [Stevenage Mental Health Support Team](#). This service works collaboratively with staff to enable children to succeed by promoting emotional health and well-being, as well as resilience. [Our designated mental health support worker is Leila Touhami](#) and she will be starting with us next week, to provide early intervention for individuals and groups of children and their families with mild to moderate mental health difficulties. In addition to what the school is already doing, she will provide support through evidence based interventions using the principles of Cognitive Behaviour Therapy (CBT), for parents of children presenting with anxiety, emotional regulation difficulties, phobias and 5-9 year olds with behavioural difficulties. If the needs are assessed to be beyond this service the support worker will help staff and parents to access appropriate alternative support. Leila will be in school one day a week and this project is due to run for 2 years, so hopefully she will also be able to run assemblies and workshops for staff and parents when COVID restrictions allow. We look forward to welcoming her into school and working with her to support more children and their families.

Spiritual, Moral, Social, Cultural and British Values

This week in Nursery the children have had lots of fun exploring the outdoor environment. As part of the new topic '**Ready, Steady, Grow**' the nursery children have been outside on a nature hunt. They have seen the beginnings of Spring, lots of new flowers growing. In the role play area the teachers have set up a greengrocers shop with real fruits and vegetables for the children to play with. The nursery children have also used some of these vegetables to make a delicious soup. Yummy!



Excellence

Respect

Equality

Determination

Courage

Inspiration

Friendship

The Leys Primary and Nursery School Newsletter

★Accelerating progress

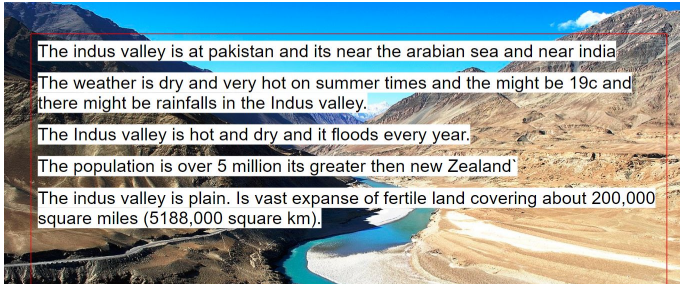
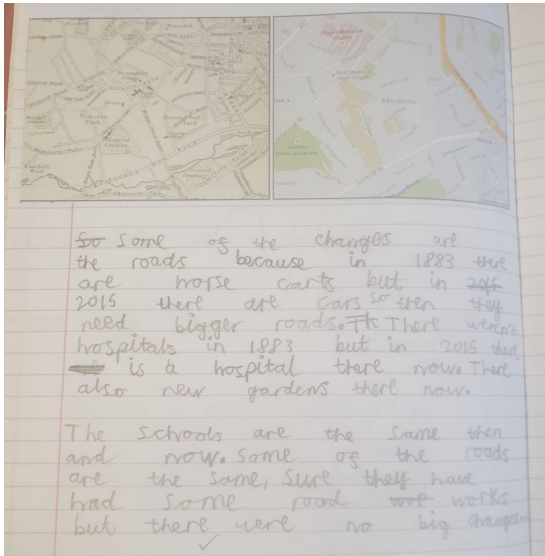
★Enriching wellbeing

★Promoting partnerships

05/03/21

Geography

UPDATE



The Most Interesting Continent:

Why did you choose this continent (give as many reasons as you can)?

- I chose South America because it has the Amazon river the 2nd longest at 4000 miles long. Machu Picchu in Peru looks really interesting and old and the scenery looks amazing. South America also has lots of interesting animals including tapirs, piranhas and anacondas it also has many endangered animals such as the jaguar, the giant otter and the Amazonian manatee.

During lockdown, we have been engaged in lots of different fun geography work, whether in the pods at school, or online.

Year 1 began by looking at The UK. They have looked at the countries that are in The UK and have also looked at the different flags. We have also started a topic 'All About Australia!' which the children are really enjoying!

Year 2 have been comparing London in the past and London as it is today, and have done a case study learning about China. This has included finding out all about pandas and their habitats.

Year 4 have been looking at natural changes, comparing places over time using maps.

The KS2 pod have spent the last 2 weeks learning all about the Indus Valley - looking at where it is on a map, what countries it covers and the features of the land.

Year 5 spent time researching information about the continents of the world, trying to convince the year 5 teachers that their continent is the most interesting.

Year 6 have all been learning about earth in its extremes - focusing on the weather. They have learnt where in the world they have:

- The lowest and highest temperatures
- The wettest and driest seasons

They have also been researching different natural disasters which have occurred around the world.

Excellence

Respect

Equality

Determination

Courage

Inspiration

Friendship

The Leys Primary and Nursery School Newsletter

★Accelerating progress

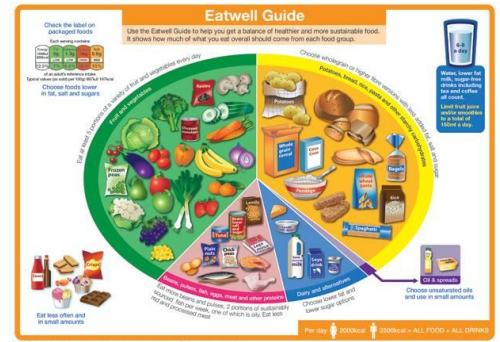
★Enriching wellbeing

★Promoting partnerships

05/03/21

PE - Healthy Active Lifestyle / Healthy Eating

This week Mr Newlands delivered a healthy active lifestyle / eating presentation to Years 1 - 6 and a video was sent out to Nursery and reception children. The children learned about the different food groups and how to lead a healthy active lifestyle. The children all thoroughly enjoyed it and behaved impeccably.



Term dates		
Start of term: 3 September 2020 Inset day: 2 September Term: 3 September -23 October <u>Half term holiday: 26 October 2020 - 30 October 2020</u> Inset day: 2 November Term: 3 November -18 December Occasional Day: 7 December <u>Christmas holiday: 21 December 2020 - 3 January 2021</u>	Inset day: 4 January Term: 5 January - 12 February <u>Half term holiday: 15 February 2021 - 19 February 2021</u> Term : 22 February-26 March 2021 <u>Easter holiday: 29 March 2021 - 9 April 2021</u>	Term: 12 April - 28 May <u>Half term holiday: 31 May 2021 - 4 June 2021</u> Inset Day: 7 June Term: 8 June-21 July Inset day 22 July <u>Summer holiday: 23 July 2021 - 31 August 2021</u>

Excellence

Respect

Equality

Determination

Courage

Inspiration

Friendship